

Powered by **Know2Grow**™

ROOTED IN RESEARCH





Table of Contents

CORN STUDIES

4-5	Planting Date Study
6-7	Population Study
7-9	Fungicide Studies
9	Seed Applied Treatment Study
10	Biological Row Cleaner Seed Size
11	Cover Crop Study
12	Show Plot
13-17	Summaries

SOYBEAN STUDIES

18-19	Planting Date I Treatment
19-20	Population Study
20	Foliar Applied Biological
20-21	Biological Studies
21	Row Cleaner
22	Planter Placement
22-25	Summaries

KNOW2GROW™ RESEARCH PROGRAM – REAL-WORLD TESTING FOR REAL RESULTS

At Ohlde Seed, research isn't just a box we check — it's the foundation of everything we recommend. Our Know2Grow™ Research Program is designed to answer the tough questions growers face every season and deliver dependable, data-driven results tailored to your specific conditions.

TESTED WHERE YOU FARM

- Our Know2Grow™ plots are strategically located across a wide range of environments — from Kansas into southern Nebraska and northern Oklahoma. This geographic diversity gives us the ability to evaluate hybrid and variety performance in multiple yield environments and soil types, so we can confidently match the right products to your fields.

REPLICATED TRIALS, NOT JUST STRIPS

- While many competitors rely on strip trials that span multiple acres and are affected by field variability, we take a more precise approach. Our replicated research plots test hybrids and varieties in condensed, consistent layouts. This reduces variability, increases data accuracy, and delivers insights you can trust.

ADVANCED PLANTING TECHNOLOGY

- Know2Grow™ uses cutting-edge technology from SRES, one of the largest research plot planter manufacturer. This planter ensures uniform seed placement, accurate population trials, and controlled comparisons. By testing multiple population rates, we uncover the performance thresholds of each hybrid or variety — helping you maximize return on every acre.

FIELD-TESTED SOLUTIONS FOR YOUR FARM

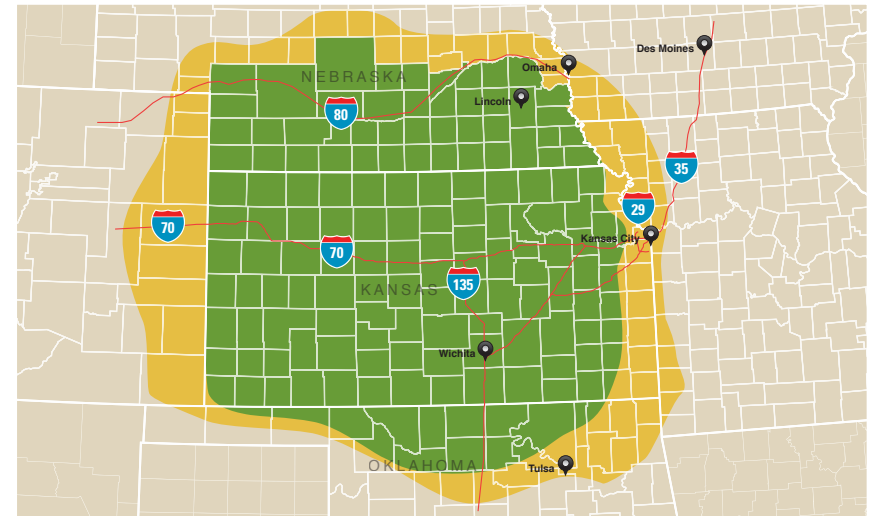
- Know2Grow™ is more than data collection — it's problem-solving. Our team uses this research to identify how products respond to real-world challenges. Whether it's drought tolerance, disease resistance, or standability, we can recommend products that directly address your field's specific concerns.

Wherever you farm, Know2Grow™ brings the insights, tools, and confidence you need to make the most of every acre.

Rooted in ResearchSM.



Research Program



- Current testing area
- Expansion area

HELPING YOU ANSWER THE BIG QUESTIONS

Our research program helps evaluate performance on the traits and conditions that matter most:

- Drought Tolerance
- Emergence & Plant Height
- Gray Leaf Spot & Goss's Wilt
- SDS & Phytophthora Tolerance
- Population Response
- Flex vs. Determinate Ear Type
- pH Sensitivity & Soil Challenges
- Corn-on-Corn Performance
- Standability & Stay-Green
- Seed Treatments & Fertility Programs
- Silage & Grain Quality
- STS Tolerance
- Southern Rust & Disease Pressure

2025 CORN PLANTING DATE STUDY BY HYBRID - RESEARCH FARM

Date Planted:	Hybrid	Yield (15% RM)	Yield % of Mean	Harvest Moisture (%)	Test Weight (lb./Bu)
4/10/25	O 23-98	134.8	82%	13.5	57.8
5/8/25	O 23-98	161.0	98%	11.8	58.5
5/24/25	O 23-98	144.2	87%	10.8	56.2
6/12/25	O 23-98	123.7	75%	12.3	56.2
4/10/25	O 24-14	175.9	107%	21.0	55.8
5/8/25	O 24-14	176.6	107%	12.4	56.9
5/24/25	O 24-14	167.4	101%	12.9	56.6
6/12/25	O 24-14	145.4	88%	20.7	54.1
4/10/25	O 25-15	162.1	98%	23.3	54.3
5/8/25	O 25-15	177.9	108%	16.9	60.1
5/24/25	O 25-15	174.5	106%	18.4	58.7
6/12/25	O 25-15	148.3	90%	23.8	53.0
4/10/25	O 25-18	186.5	113%	28.5	51.8
5/8/25	O 25-18	203.6	123%	16.0	58.7
5/24/25	O 25-18	175.9	107%	19.5	57.1
6/12/25	O 25-18	145.2	88%	24.1	50.6
4/10/25	O 26-12	188.6	114%	19.4	56.3
5/8/25	O 26-12	188.5	114%	14.8	59.4
5/24/25	O 26-12	179.6	109%	15.5	59.1
6/12/25	O 26-12	147.7	90%	20.9	53.6
4/10/25	O 26-14	172.5	105%	22.3	52.8
5/8/25	O 26-14	182.0	110%	13.3	57.8
5/24/25	O 26-14	171.9	104%	16.7	57.4
6/12/25	O 26-14	145.4	88%	28.2	51.3
4/10/25	O 29-14	158.1	96%	24.0	52.3
5/8/25	O 29-14	196.3	119%	13.4	59.7
5/24/25	O 29-14	181.0	110%	15.7	59.1
6/12/25	O 29-14	146.8	89%	18.6	54.0
4/10/25	O 36-06	137.7	83%	16.7	56.4
5/8/25	O 36-06	186.7	113%	12.4	58.9
5/24/25	O 36-06	157.0	95%	11.5	56.0
6/12/25	O 36-06	138.6	84%	15.8	54.1
Plot Avg.		165.0			

Date Planted: — Population (s/ac): **23,000**
 Date Harvested: **10/15/25** Tillage Type: **No-Till**
 Rows Harvested: **2** Previous Crop: **Soybean**
 Harvested Length: **50'** Dryland/Irrigation: **Dryland**



THIS DATA CONTAINS PROPRIETARY AND CONFIDENTIAL INFORMATION OF OHLDE SEED FARMS AND SHALL NOT BE USED, DISCLOSED OR REPRODUCED, IN WHOLE OR IN PART, FOR ANY PURPOSE OTHER THAN TO EVALUATE THIS DATA, WITHOUT THE PRIOR WRITTEN CONSENT OF OHLDE SEED FARMS.

2025 CORN PLANTING DATE STUDY - DATES AVG'D - RESEARCH FARM

Planting Date	Harvest Date	Hybrid	Yield (15% RM)	Yield % of Mean	Harvest Moisture (%)	Test Weight (lb./Bu)
4/10	9/15	All	164.5	100%	21.1	54.7
5/8	10/5	All	184.1	112%	13.9	58.8
5/24	10/5	All	168.9	102%	15.1	57.5
6/12	10/5	All	142.6	86%	20.6	53.4
Plot Avg.			165.0			

Date Planted: —
 Date Harvested: —
 Rows Harvested: **2 - 30" row**
 Harvested Length: **50'**
 Population (s/ac): **23,000**
 Tillage Type: **No-Till**
 Previous Crop: **Soybean**
 Dryland/Irrigation: **Dryland**



THIS DATA CONTAINS PROPRIETARY AND CONFIDENTIAL INFORMATION OF OHLDE SEED FARMS AND SHALL NOT BE USED, DISCLOSED OR REPRODUCED, IN WHOLE OR IN PART, FOR ANY PURPOSE OTHER THAN TO EVALUATE THIS DATA, WITHOUT THE PRIOR WRITTEN CONSENT OF OHLDE SEED FARMS.



2025 CORN POPULATION STUDY - ALL - RESEARCH FARM

Population (seeds/ac)	Hybrid	Yield (15% RM)	Yield % of Mean	Harvest Moisture (%)	Test Weight (lb./Bu)
18,000	O 23-16	172.4	94%	15.5	57.9
21,000	O 23-16	177.0	97%	13.5	57.6
23,000	O 23-16	186.0	101%	16.5	57.5
24,500	O 23-16	192.3	105%	13.3	57.3
26,000	O 23-16	188.3	103%	16.8	57.4
18,000	O 24-14	173.1	94%	11.4	56.8
21,000	O 24-14	172.1	94%	12.9	56.7
23,000	O 24-14	179.5	98%	11.6	56.1
24,500	O 24-14	178.9	98%	11.9	56.6
26,000	O 24-14	182.3	99%	11.6	56.6
18,000	O 24-15	195.8	107%	17.6	57.3
21,000	O 24-15	193.3	105%	17.2	56.8
23,000	O 24-15	189.4	103%	13.8	57.5
24,500	O 24-15	190.0	104%	15.0	56.6
26,000	O 24-15	188.8	103%	12.8	57.6
18,000	O 25-15	186.5	102%	16.8	60.7
21,000	O 25-15	193.6	106%	17.4	60.1
23,000	O 25-15	188.4	103%	17.8	61.5
24,500	O 25-15	185.1	101%	18.2	61.3
26,000	O 25-15	187.5	102%	16.0	62.0
18,000	O 25-18	173.2	94%	16.0	58.2
21,000	O 25-18	178.5	97%	15.3	58.7
23,000	O 25-18	174.4	95%	18.1	58.3
24,500	O 25-18	180.0	98%	15.2	58.3
26,000	O 25-18	172.0	94%	19.9	56.9
18,000	O 26-12	180.1	98%	15.2	59.8
21,000	O 26-12	189.5	103%	14.4	59.6
23,000	O 26-12	197.5	108%	14.5	59.8
24,500	O 26-12	210.9	115%	13.4	59.5
26,000	O 26-12	205.8	112%	13.6	59.3
18,000	O 26-14	177.8	97%	14.5	58.3
21,000	O 26-14	184.0	100%	15.3	57.6
23,000	O 26-14	183.5	100%	14.3	57.9
24,500	O 26-14	186.5	102%	14.2	58.9
26,000	O 26-14	185.9	101%	14.0	58.4
18,000	O 35-12	176.4	96%	15.5	57.0
21,000	O 35-12	186.3	102%	11.4	55.9
23,000	O 35-12	184.2	100%	11.7	55.5
24,500	O 35-12	186.5	102%	12.2	56.2
26,000	O 35-12	192.4	105%	12.8	57.9
18,000	O 36-06	154.5	84%	12.2	56.1
21,000	O 36-06	169.5	92%	12.6	55.5
23,000	O 36-06	174.2	95%	12.2	57.7
24,500	O 36-06	171.2	93%	12.8	57.7
26,000	O 36-06	179.3	98%	12.4	58.3
Plot Avg.		151.8			

Date Planted: **5/8/25**
 Date Harvested: **10/5/25**
 Rows Harvested: **2 30" rows**
 Harvested Length: **55'**
 Population (s/ac): **18k, 21.5k, 23k, 24.5k, 26k**
 Tillage Type: **No-Till**
 Previous Crop: **Soybean**
 Dryland/Irrigation: **Dryland**



THIS DATA CONTAINS PROPRIETARY AND CONFIDENTIAL INFORMATION OF OHLDE SEED FARMS AND SHALL NOT BE USED, DISCLOSED OR REPRODUCED, IN WHOLE OR IN PART, FOR ANY PURPOSE OTHER THAN TO EVALUATE THIS DATA, WITHOUT THE PRIOR WRITTEN CONSENT OF OHLDE SEED FARMS.

2025 CORN POPULATION STUDY - RESEARCH FARM

Population (seeds/ac)	Yield (15%RM)	Yield % of Mean	Harvest Moisture (%)	Test Weight (lb./Bu)
18,000	176.6	96%	15.0	58.0
21,000	182.6	100%	14.4	57.6
23,000	184.1	100%	14.5	58.0
24,500	186.8	102%	14.0	58.0
26,000	186.9	102%	14.4	58.3
Plot Avg.	183.4			

All Hybrids: O 36-06, O 26-12, O 35-12, 24-14, 26-14, 25-15, 23-16, 25-18

Date Planted: **5/8/25**
 Date Harvested: **10/5/25**
 Rows Harvested: **2**
 Harvested Length: **55'**

Population (s/ac): **—**
 Tillage Type: **No-Till**
 Previous Crop: **Soybean**
 Dryland/Irrigation: **Dryland**

2025 CORN FOLIAR FUNGICIDE STUDY - RESEARCH FARM

Fungicide Applied	Rate Applied (fl.oz/acre)	Yield (15% RM)	Yield % of Mean	Harvest Moisture (%)	Test Weight (lb./Bu)
Veltyma	7.0	213.7	108%	12.7	57.5
Trivapro	13.7	204.2	103%	12.7	57.7
Revytek	8.0	200.2	101%	12.7	57.5
Priaxor+generic propiconazole	8.0+2.5+6.8	198.7	101%	12.6	57.1
Lucento+generic azoxystrobin	5.0+5.8	197.4	100%	12.7	57.5
Generic azoxystrobin	6.0	197.3	100%	12.7	57.7
Adastrio	8.0	194.7	99%	12.7	57.9
Generic azoxystrobin+propiconazole	10.5	189.5	96%	12.6	57.1
Non-Treated		182.1	92%	12.6	57.6
Plot Avg.		197.5			

Date Planted: **5/12/25**
 Date Harvested: **10/20/25**
 Date Fungicide Applied: **7/29/25**
 Harvested Length: **25' (5 reps)**
 Population (s/ac): **23,000**
 Tillage Type: **No-Till**
 Previous Crop: **Soybean**
 Dryland/Irrigation: **Dryland**

THIS DATA CONTAINS PROPRIETARY AND CONFIDENTIAL INFORMATION OF OHLDE SEED FARMS AND SHALL NOT BE USED, DISCLOSED OR REPRODUCED, IN WHOLE OR IN PART, FOR ANY PURPOSE OTHER THAN TO EVALUATE THIS DATA, WITHOUT THE PRIOR WRITTEN CONSENT OF OHLDE SEED FARMS.



2025 CORN FUNGICIDE STUDY - BY HYBRID - RESEARCH FARM

Fungicide	Hybrid	Yield (15% RM)	Yield % of Mean	Harvest Moisture (%)	Test Weight (lb./Bu)
No Fungicide	O 23-16	157.7	89%	13.8	56.3
Fungicide	O 23-16	182.0	103%	13.9	57.3
No Fungicide	O 24-14	167.2	95%	13.9	55.6
Fungicide	O 24-14	185.9	105%	13.9	57.7
No Fungicide	O 25-12	144.3	82%	13.8	58.8
Fungicide	O 25-12	176.1	100%	14.0	59.9
No Fungicide	O 25-15	187.7	106%	13.5	61.5
Fungicide	O 25-15	190.9	108%	14.2	62.2
No Fungicide	O 25-18	189.8	107%	13.6	59.2
Fungicide	O 25-18	209.1	118%	14.1	59.1
No Fungicide	O 26-12	163.5	93%	13.7	60.0
Fungicide	O 26-12	198.9	113%	14.0	60.5
No Fungicide	O 26-14	163.7	93%	13.8	57.4
Fungicide	O 26-14	190.9	108%	14.0	59.4
No Fungicide	O 29-14	174.5	99%	13.6	61.0
Fungicide	O 29-14	183.5	104%	14.2	61.4
No Fungicide	O 35-12	163.5	93%	13.7	56.1
Fungicide	O 35-12	185.8	105%	14.0	58.0
No Fungicide	O 36-06	143.9	81%	13.8	57.5
Fungicide	O 36-06	175.0	99%	14.0	58.9
Plot Avg.		176.7			

Date Planted: **5/3/25**
 Date Harvested: **10/22/25**
 Date Applied: **7/14/25**
 Harvested Length: **30' (3 reps)**
 Population (s/ac): **23,000**
 Tillage Type: **No-Till**
 Previous Crop: **Soybean**
 Dryland/Irrigation: **Dryland**

2025 CORN FUNGICIDE STUDY - AVG'D - RESEARCH FARM

Fungicide	Hybrid	Yield (15% RM)	Yield % of Mean	Harvest Moisture (%)	Test Weight (lb./Bu)
No Fungicide	All	162.4	93%	14.0	59.4
Fungicide	All	186.3	107%	13.7	58.2
Plot Avg.		174.3			

All Hybrids: O 36-06, O 25-12, O 35-12, O 26-12, O 29-14, O 26-14, O 24-14 O 25-15 O 23-16 O 25-18

Date Planted: **5/12/25**
 Date Harvested: **10/12/25**
 Date Applied: **7/14/25**
 Harvested Length: **40'**
 Population (s/ac): **32,000**
 Tillage Type: **No-Till**
 Previous Crop: **Soybeans**
 Dryland/Irrigation: **Dryland**

THIS DATA CONTAINS PROPRIETARY AND CONFIDENTIAL INFORMATION OF OHLDE SEED FARMS AND SHALL NOT BE USED, DISCLOSED OR REPRODUCED, IN WHOLE OR IN PART, FOR ANY PURPOSE OTHER THAN TO EVALUATE THIS DATA, WITHOUT THE PRIOR WRITTEN CONSENT OF OHLDE SEED FARMS.

2025 CORN FUNGICIDE STUDY - BY HYBRID - RESEARCH FARM

Fungicide	Hybrid	Yield (15% RM)	Yield % of Mean	Harvest Moisture (%)	Test Weight (lb./Bu)
No Fungicide	O 24-15	271.6	104%	15.4	61.1
Fungicide	O 24-15	272.2	104%	15.6	61.0
No Fungicide	O 25-18	256.8	98%	15.5	61.3
Fungicide	O 25-18	274.9	105%	15.5	61.1
No Fungicide	O 26-14	249.9	96%	15.5	60.5
Fungicide	O 26-14	269.8	103%	15.5	61.2
No Fungicide	O 29-14	245.3	94%	15.4	61.8
Fungicide	O 29-14	248.8	95%	15.6	62.0
No Fungicide	O 35-12	266.1	102%	15.7	59.1
Fungicide	O 35-12	273.2	105%	15.4	59.7
No Fungicide	O 36-06	221.6	85%	15.3	57.4
Fungicide	O 36-06	240.2	92%	15.5	58.6
No Fungicide	O 47-12	277.0	106%	15.4	60.9
Fungicide	O 47-12	285.2	109%	15.5	60.4
Plot Avg.		260.9			

Date Planted: **5/3/25**
 Date Harvested: **10/22/25**
 Date Applied: **7/14/25**
 Harvested Length: **30' (3 reps)**
 Population (s/ac): **32,000**
 Tillage Type: **No-Till**
 Previous Crop: **Soybean**
 Dryland/Irrigation: **Irrigation**

2025 CORN FUNGICIDE STUDY - AVG'D - RESEARCH FARM

Fungicide	Hybrid	Yield (15% RM)	Yield% of Mean	Harvest Moisture (%)	Test Weight (lb./Bu)
No Fungicide	All	255.2	98%	15.5	60.6
Fungicide	All	265.8	102%	15.4	60.3
Plot Avg.		260.5			

All Hybrids: O 36-06, O 47-12, O 35-12, O 26-14, O 29-14, O 24-15, O 25-18

Date Planted: **5/3/25**
 Date Harvested: **10/12/25**
 Date Applied: **7/14/25**
 Harvested Length: **42'**
 Population (s/ac): **32,000**
 Tillage Type: **No-Till**
 Previous Crop: **Soybeans**
 Dryland/Irrigation: **Irrigation**

2025 CORN SEED APPLIED TREATMENT STUDY - RESEARCH FARM

Company	Seed Applied Product	Hybrid	Yield Bu/ac	Yield % of Mean	Harvest Moisture (%)	Test Weight (lb./Bu)
New Fields Ag	N-Bolst-R	O 25-12	177.0	102%	13.4	57.1
Koch Ind	Protivate	O 25-12	176.1	101%	13.4	56.8
New Fields Ag	Nutriquire	O 25-12	176.0	101%	13.3	57.8
Mertistem	Hopper Throttle	O 25-12	172.0	99%	13.4	57.3
	No Treatment	O 25-12	170.5	98%	13.3	57.4
Agrauxine	Sabr Ex	O 25-12	170.1	98%	13.4	57.1
Plot Avg.			173.6			

Date Planted: **5/12/25**
 Date Harvested: **10/22/25**
 Rows Harvested: **2**
 Harvested Length: **40' (6 reps)**
 Population (s/ac): **23,000**
 Tillage Type: **No-Till**
 Previous Crop: **Corn**
 Dryland/Irrigation: **Dryland**

THIS DATA CONTAINS PROPRIETARY AND CONFIDENTIAL INFORMATION OF OHLDE SEED FARMS AND SHALL NOT BE USED, DISCLOSED OR REPRODUCED, IN WHOLE OR IN PART, FOR ANY PURPOSE OTHER THAN TO EVALUATE THIS DATA, WITHOUT THE PRIOR WRITTEN CONSENT OF OHLDE SEED FARMS.



2025 CORN BIOLOGICAL STUDY - RESEARCH FARM

Company	In-furrow Biological Applied	Folair Product Applied	Yield Bu/ac	Yield % of Mean	Harvest Moisture (%)	Test Weight (lb./Bu)
Yield Master	Kugler + N-Physis		167.8	107%	13.5	58.2
Agrauxine	Kugler	SmartFoil	162.7	104%	13.6	58.8
BioLINE	Gold Fulv-IQ	Gold Fulv-IQ	157.3	101%	13.5	58.2
Vive Crop	Kugler + Azteroid FC 3.3 + Phobos		157.3	101%	13.5	58.7
Vive Crop	Kugler + Aderland FC		156.0	100%	13.5	58.5
Lygos	Soltellus 2000L	Soltellus 2000L	156.0	100%	13.7	58.6
BioLINE	Gold Fulv-IQ		155.1	99%	13.6	58.7
Biolevel	Kugler + Maize NP		154.9	99%	13.5	58.8
Vive Crop	Kugler + Azkerknot FC		154.6	99%	13.5	58.3
Lygos	Soltellus 2000L		154.4	99%	13.4	58.5
Meristem	Upshift C Ether		154.0	98%	13.4	58.3
Vive Crop	Phobos		153.7	98%	13.5	58.5
Kugler	Kugler		153.5	98%	13.5	58.2
Vive Crop	Kugler + Azteroid FC 3.3		153.4	98%	13.5	59.0
Plot Avg.			156.5			

Date Planted: **5/12/25**
 Date Harvested: **10/22/25**
 Rows Harvested: **2**
 Harvested Length: **40' (4 reps)**
 Population (s/ac): **23,000**
 Tillage Type: **No Till**
 Previous Crop: **Com**
 Dryland/Irrigation: **Dryland**

2025 CORN ROW CLEANER - RESEARCH FARM

Row Cleaner	Yield (15%RM)	Yield % of Mean	Harvest Moisture (%)	Test Weight (lb./Bu)
Up	179.2	99%	12.0	573
Down	182.1	101%	12.0	573
Plot Avg.	180.6			

Date Planted: **5/8/25**
 Date Harvested: **10/5/25**
 Rows Harvested: **2**
 Harvested Length: **170'**
 Population (s/ac): **23,000**
 Tillage Type: **No-Till**
 Previous Crop: **Soybean**
 Dryland/Irrigation: **Dryland**

2025 CORN SEED SIZE STUDY - RESEARCH FARM

Seed Size	Bag Weight (lbs./unit)	Hybrid	Yield (15%RM)	Yield % of Mean	Harvest Moisture (%)	Test Weight (lb./Bu)
MF	45.1	O 29-14	182.7	101%	15.2	60.0
LF	56.5	O 29-14	180.9	100%	15.2	60.6
SR	41.1	O 29-14	180.8	100%	15.8	61.8
LR	59.8	O 29-14	179.1	99%	14.9	60.7
MR	49.2	O 29-14	178.5	99%	16.2	61.5
Plot Avg.			180.4			

Date Planted: **5/8/25**
 Date Harvested: **10/5/25**
 Rows Harvested: **2**
 Harvested Length: **42'**
 Population (s/ac): **23,000**
 Tillage Type: **No-Till**
 Previous Crop: **Soybean**
 Dryland/Irrigation: **Dryland**

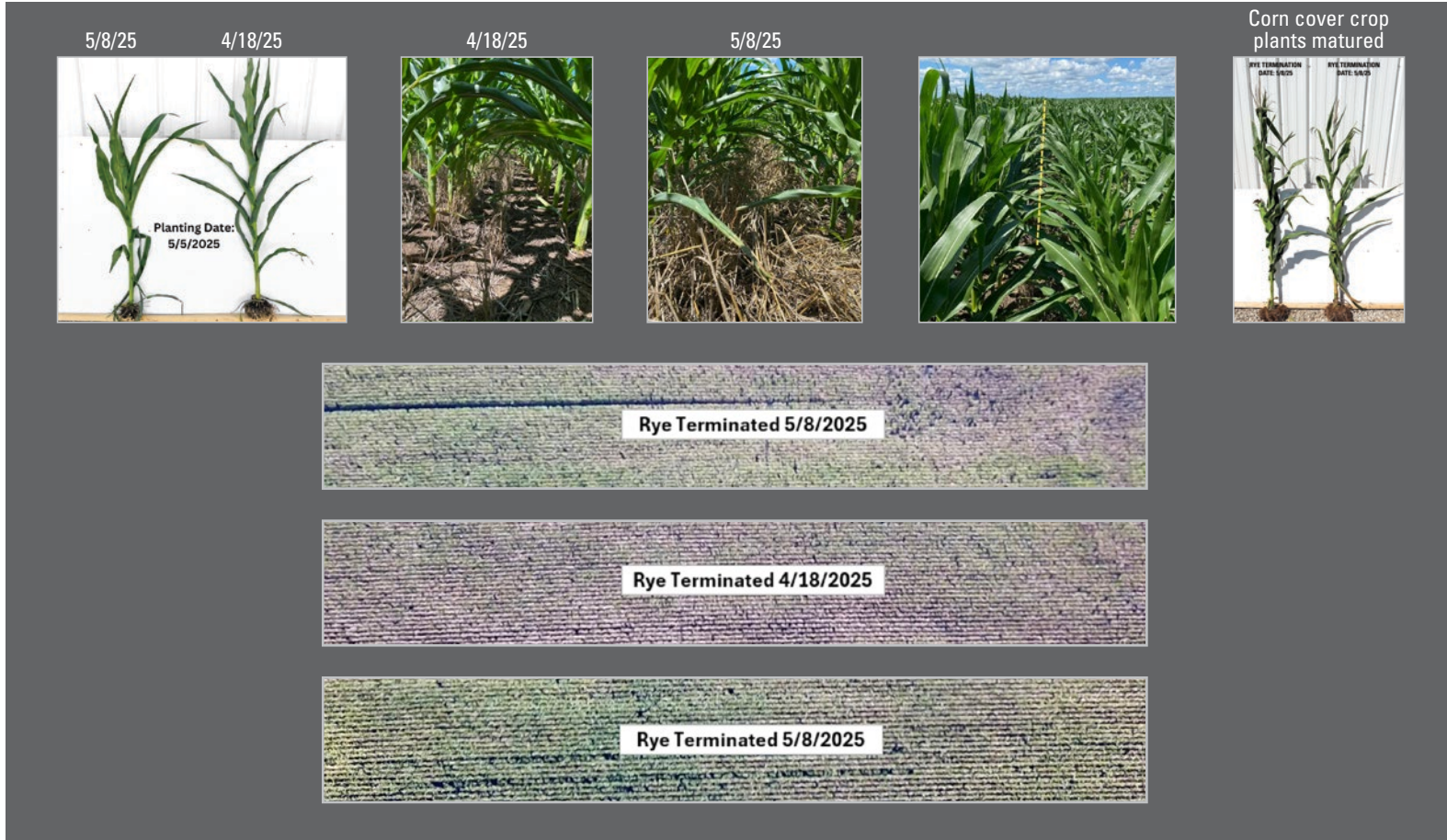
THIS DATA CONTAINS PROPRIETARY AND CONFIDENTIAL INFORMATION OF OHLDE SEED FARMS AND SHALL NOT BE USED, DISCLOSED OR REPRODUCED, IN WHOLE OR IN PART, FOR ANY PURPOSE OTHER THAN TO EVALUATE THIS DATA, WITHOUT THE PRIOR WRITTEN CONSENT OF OHLDE SEED FARMS.

2025 CORN COVER CROP STUDY - RESEARCH FARM

Hybrid	Rye Sprayed	Yield (15% RM)	Yield% of Mean	Harvest Moisture (%)	Test Weight (lb./Bu)
O 25-12	4/18/25	192.0	106%	13.1	57.3
O 25-12	5/8/25	170.1	94%	13.0	56.7
Plot Avg.		181.1			








Date Planted: **5/5/25**
 Date Harvested: **11/9/25**
 Rows Harvested: **16**
 Harvested Length: **1,200'**
 Population (s/ac): **23,500**
 Tillage Type: **No-Till**
 Previous Crop: **Soybeans**
 Dryland/Irrigation: **Dryland**

Rye Terminated:



THIS DATA CONTAINS PROPRIETARY AND CONFIDENTIAL INFORMATION OF OHLDE SEED FARMS AND SHALL NOT BE USED, DISCLOSED OR REPRODUCED, IN WHOLE OR IN PART, FOR ANY PURPOSE OTHER THAN TO EVALUATE THIS DATA, WITHOUT THE PRIOR WRITTEN CONSENT OF OHLDE SEED FARMS.

2025 CORN SHOW PLOT - RESEARCH FARM

Trait	Hybrid	Yield (15% RM)	Yield % of Mean	Harvest Moisture (%)	Test Weight (lb./Bu)
	O 36-05	188.0	101%	11.9	56.7
	O 36-06	175.7	94%	11.8	56.6
	O 35-12	189.9	102%	12.1	56.6
	O 36-13	174.9	94%	15.4	56.9
	O 21-14	188.7	101%	16.7	55.7
	O 26-12	195.0	105%	14.8	59.2
	O 23-16	188.2	101%	13.7	56.7
	O 24-05	177.5	95%	13.2	59.0
	O 29-06	180.8	97%	12.3	57.0
	O 25-10	175.0	94%	12.1	57.5
	O 25-12	167.5	90%	12.0	57.8
	O 24-14	169.8	91%	11.3	56.1
	O 28-14	182.6	98%	15.2	58.9
	O 29-14	197.7	106%	14.8	59.4
	O 25-15	192.0	103%	18.1	59.8
	O 23-98	169.8	91%	11.7	57.6
	O 26-13	184.1	99%	14.5	59.9
	O 26-14	181.0	97%	14.6	56.8
	O 24-15	210.0	113%	16.8	57.0
	O 25-18	211.3	113%	15.8	58.0
	O 47-12	209.5	112%	17.1	57.3
	O 84-09	185.8	100%	13.0	59.1
	O 86-15	177.4	95%	15.1	59.0
	O 86-09	198.5	107%	12.9	58.3
					
Plot Avg.		186.3			

Date Planted: **5/8/25**
 Date Harvested: **10/4/25**
 Rows Harvested: **2**
 Harvested Length: **170' (3 reps)**
 Population (s/ac): **23,000**
 Tillage Type: **No-Till**
 Previous Crop: **Soybean**
 Dryland/Irrigation: **Dryland**

THIS DATA CONTAINS PROPRIETARY AND CONFIDENTIAL INFORMATION OF OHLDE SEED FARMS AND SHALL NOT BE USED, DISCLOSED OR REPRODUCED, IN WHOLE OR IN PART, FOR ANY PURPOSE OTHER THAN TO EVALUATE THIS DATA, WITHOUT THE PRIOR WRITTEN CONSENT OF OHLDE SEED FARMS.

CORN MULTI-YEAR STUDIES

2024 CORN PLANTING DATE STUDY - DATES AVERAGED - RESEARCH FARM

Planting Date	Hybrid	Yield (15% RM)	Yield % of Mean
4/11/24	All	172.1	94%
4/22/24	All	184.9	101%
5/10/24	All	190.6	104%
Plot Avg.		182.5	

All hybrids: O 20-08, O 22-13, O 24-16

Date Harvested: **10/13/24**
 Rows Harvested: **2 - 30" row**
 Harvested Length: **55 Feet**
 Population (s/ac): **23,000**
 Tillage Type: **No-Till**
 Previous Crop: **Soybeans**
 Dryland/Irrigation: **Dryland**

2023 CORN PLANTING DATE STUDY - DATES AVERAGED - RESEARCH FARM

Planting Date	Hybrid	Yield (15% RM)	Yield % of Mean
4/11/23	All	160.7	110%
5/9/23	All	160.4	109%
5/25/23	All	146.0	100%
6/16/23	All	119.8	82%
Plot Avg.		146.7	

All hybrids: O 20-08, O 22-13, O 24-16

Rows Harvested: **2 - 30" row**
 Harvested Length: **55 Feet**
 Population (s/ac): **23,000**
 Tillage Type: **No-Till**
 Previous Crop: **Soybeans**
 Dryland/Irrigation: **Dryland**

2022 CORN PLANTING DATE STUDY - DATES AVERAGED - RESEARCH FARM

Planting Date	Hybrid	Yield (15% RM)	Yield % of Mean
4/6/22	All	167.6	96%
5/12/22	All	182.8	104%
Plot Avg.		175.2	

All hybrids: O 21-05, O 22-12, O 21-13, O 22-13, O 29-14

Rows Harvested: **2 - 30" row**
 Harvested Length: **55 Feet**
 Previous Crop: **Soybeans**
 Dryland/Irrigation: **Dryland**

2021 CORN PLANTING DATE STUDY - DATES AVERAGED - RESEARCH FARM

Planting Date	Hybrid	Yield (15% RM)	Yield % of Mean
4/6/21	All	171.8	95%
5/1/21	All	187.6	104%
6/5/21	All	181.5	101%
Plot Avg.		181.5	

All hybrids: O 29-06, O 20-08, O 21-11, O 28-12, O 28-13, O 28-14, O 29-14, O 21-14, EXP 218

Date Harvested: **10/26/21**
 Rows Harvested: **2 - 30" row**
 Harvested Length: **55 Feet**
 Population (s/ac): **22,000**
 Tillage Type: **No-Till**
 Previous Crop: **Soybeans**
 Dryland/Irrigation: **Dryland**



THIS DATA CONTAINS PROPRIETARY AND CONFIDENTIAL INFORMATION OF OHLDE SEED FARMS AND SHALL NOT BE USED, DISCLOSED OR REPRODUCED, IN WHOLE OR IN PART, FOR ANY PURPOSE OTHER THAN TO EVALUATE THIS DATA, WITHOUT THE PRIOR WRITTEN CONSENT OF OHLDE SEED FARMS.

2020 CORN PLANTING DATE STUDY – DATES AVERAGED – RESEARCH FARM

Planting Date	Hybrid	Yield (15% RM)	Yield % of Mean
4/2/20	All	177.6	91%
5/1/20	All	195.0	100%
Plot Avg.		195.0	

All hybrids: O 29-06, O 20-08, O 21-11, O 28-12, O 28-13, O 28-14, O 29-14, O 21-14, EXP 218

Date Harvested: **11/6/20**
 Rows Harvested: **2 - 30" row**
 Harvested Length: **55 Feet**
 Population (s/ac): **22,000**
 Tillage Type: **No-Till**
 Previous Crop: **Soybeans**
 Dryland/Irrigation: **Dryland**

2020-2025 CORN POPULATION AVERAGE – RESEARCH FARM

Population (s/ac)	2020 Yield (bu/ac)	2021 Yield (bu/ac)	2022 Yield (bu/ac)	2023 Yield (bu/ac)	2024 Yield (bu/ac)	2025 Yield (bu/ac)	6-year Average (bu/ac)
18,000	183.9	195.3	147.5	135.0	152.9	176.6	162.9
21,000	196.0	197.9	158.4	149.2	156.9	182.6	171.7
23,000	199.9	206.9	160.2	152.9	157.2	184.1	175.4
24,500	203.9	196.4	161.7	154.7	157.8	186.8	174.9
26,000	209.9	181.7	161.8	156.0	157.7	186.9	173.4

Rows Harvested: **2 - 30" row**
 Harvested Length: **40 Feet**
 Previous Crop: **Soybeans**
 Dryland/Irrigation: **Dryland**

Know2Grow™ Comments: To increase the population from 18,000 s/ac to 23,000 s/ac we will need to see a 4.2 bu. advantage to break even at \$4.00/bu. To increase population from 23,000 s/ac to 26,000 s/ac need to see a 2.5 bu. advantage.

2024-2025 CORN FUNGICIDE STUDY - AVG'D - RESEARCH FARM

Fungicide	Hybrid	2024 Yield (15% RM)	2025 Yield (15% RM)	2-Year Average
No Fungicide	All	165.9	162.4	164.1
Fungicide	All	171.8	186.3	179.0
Plot Avg.		168.9		

Date Planted: —
 Date Harvested: —
 Date Applied: —
 Harvested Length: **42'**
 Population (s/ac): **23,000**
 Tillage Type: **No-Till**
 Previous Crop: **Soybeans**
 Dryland/Irrigation: **Dryland**

THIS DATA CONTAINS PROPRIETARY AND CONFIDENTIAL INFORMATION OF OHLDE SEED FARMS AND SHALL NOT BE USED, DISCLOSED OR REPRODUCED, IN WHOLE OR IN PART, FOR ANY PURPOSE OTHER THAN TO EVALUATE THIS DATA, WITHOUT THE PRIOR WRITTEN CONSENT OF OHLDE SEED FARMS.

2017, 2018, 2022 & 2023 CORN PLANTING DEPTH STUDY – RESEARCH FARM

Planting Depth	2017 (bu./ac)	2018 (bu./ac)	2022 (bu./ac)	2023 (bu./ac)	4-Year Average
Shallow	86.9	131.9	146.3	119.8	121.2
Mid	99.3	139.1	149.8	139.3	131.9
Deep	91.2	133.7	143.6	143.0	127.9
Plot Avg.	146.6				

Shallow = < 1.75"
 Mid = 1.75" - 2.75"
 Deep = > 2.75"

Date Planted: **5/9/23**
 Date Harvested: **9/21/23**
 Rows Harvested: **2 - 30" row**
 Harvested Length: **170 Feet**
 Population (s/ac): **23,000**
 Tillage Type: **No-Till**
 Previous Crop: **Soybeans**
 Dryland/Irrigation: **Dryland**

2023-2025 CORN ROW CLEANER – RESEARCH FARM

Row Cleaner	2023 (Bu./Ac)	2024 (Bu./Ac)	2025 (Bu./Ac)	Yield % of Mean	Harvest Moisture (%)	Test Weight (lb./Bu)
Up	143.2	139.1	179.2	115%	12.0	57.3
Down	148.5	140.5	182.1	117%	12.0	57.3
Plot Avg.	155.4					

Date Planted: **5/8/25**
 Date Harvested: **10/5/25**
 Rows Harvested: **2**
 Harvested Length: **170 feet**
 Population (s/ac): **23,000**
 Tillage Type: **No-Till**
 Previous Crop: **Soybeans**
 Dryland/Irrigation: **Dryland**

2016, 2017, 2023, 2024 CORN STARTER FERTILIZER STUDY AVERAGE – RESEARCH FARM

In-furrow Starter Fertilizer	2016 Yield (bu/ac)	2017 Yield (bu/ac)	2023 Yield (bu/ac)	2024 Yield (bu/ac)	4-year Average (bu/ac)
Off	150.2	105.3	111.9	160.2	131.9
On	156.5	106.8	115.6	165.2	136.0

In-furrow product: Kugler 9-24-3-1s @ 5 gal./Ac

Rows Harvested: **4 - 30" row**
 Tillage Type: **No-Till**
 Previous Crop: **Soybeans**
 Dryland/Irrigation: **Dryland**



2020 CORN CLOSING WHEEL STUDY - RESEARCH FARM



Closing Wheel	Stand Count	Yield (15% RM)	Yield % of Mean
Schaffert Mohawk	20,600	195.4	103%
Yetter Twister	22,000	194.4	102%
Schlagel Posi	22,000	193.8	102%
Yetter Paddle Wheel	22,000	193.0	101%
Solid Rubber	22,000	191.5	101%
Copperhead Furrow Cruiser	20,100	188.4	99%
Tompson	20,000	188.1	99%
Dawn-M Curvetine	21,000	179.7	94%
RFM Auspoint Coil	21,300	179.3	94%
Plot Avg.		190.5	

Date Planted: **5/1/20**
 Date Harvested: **11/7/20**
 Rows Harvested: **2 - 30" row**
 Harvested Length: **170 Feet**
 Population (s/ac): **22,000**
 Tillage Type: **No-Till**
 Previous Crop: **Soybeans**
 Dryland/Irrigation: **Dryland**



Yetter Twister



Copperhead Furrow Cruiser



Solid Rubber



Schlagel Posi



Tompson



Schlagel Mohawk



Dawn M-Series Curvetine



Yetter Paddle Wheel



Auspoint Coil Closing

2021 CORN CLOSING WHEEL STUDY - RESEARCH FARM



Closing Wheel	Stand Count	Yield (15% RM)	Yield % of Mean
Schlagel Posi	23,600	200.4	101%
Tompson	24,125	198.6	100%
Mohawk	23,500	198.3	100%
Copperhead Furrow Cruiser	23,300	198.0	100%
Yetter Twister	23,500	197.9	100%
Solid Rubber	23,583	197.8	100%
Plot Avg.		198.5	

Date Planted: **6/6/21**
 Date Harvested: **11/2/21**
 Rows Harvested: **2 - 30" row**
 Harvested Length: **170 Feet**
 Population (s/ac): **24,500**
 Tillage Type: **No-Till**
 Previous Crop: **Soybeans**
 Dryland/Irrigation: **Dryland**



Yetter Twister



Copperhead Furrow Cruiser



Solid Rubber



Schlagel Posi



Tompson



Schlagel Mohawk

THIS DATA CONTAINS PROPRIETARY AND CONFIDENTIAL INFORMATION OF OHLDE SEED FARMS AND SHALL NOT BE USED, DISCLOSED OR REPRODUCED, IN WHOLE OR IN PART, FOR ANY PURPOSE OTHER THAN TO EVALUATE THIS DATA, WITHOUT THE PRIOR WRITTEN CONSENT OF OHLDE SEED FARMS.

2021 CORN SEED SIZE STUDY - RESEARCH FARM

Brand	Seed Size – lbs./unit	Hybrid	Yield (15% RM)	Yield % of Mean	Harvest Moisture (%)	Test Weight (lb./Bu)
OHLDE	MR - 45.8 lbs	O 28-14	179.6	102%	13.8	56.7
OHLDE	LR - 58.8 lbs	O 28-14	176.4	100%	13.8	56.7
OHLDE	SF - 41.8 lbs	O 28-14	175.2	99%	14.0	56.2
OHLDE	MF - 54.0 lbs	O 28-14	175.1	99%	13.9	56.9
Plot Avg.			176.6			

Date Planted: **5/1/21** Population (s/ac): **22,000**
 Date Harvested: **10/26/21** Tillage Type: **No-Till**
 Rows Harvested: **2 - 30" row** Previous Crop: **Soybeans**
 Harvested Length: **170 feet** Dryland/Irrigation: **Dryland**

2024 CORN SEED SIZE STUDY - RESEARCH FARM

Seed Size	Bag Weight (lbs./unit)	Hybrid	Yield (15%RM)	Yield % of Mean	Harvest Moisture (%)	Test Weight (lb./Bu)
SR	41.7	O 29-14	151.6	101%	15.2	60.0
LR	61.5	O 29-14	150.1	100%	15.2	60.6
MR	54.8	O 29-14	149.9	100%	15.8	61.8
MF	48.4	O 29-14	149.6	100%	14.9	60.7
SF	40.5	O 29-14	148.4	99%	16.2	61.5
Plot Avg.			149.9			

Date Planted: **5/10/24** Population (s/ac): **23,000**
 Date Harvested: **9/29/24** Tillage Type: **No-Till**
 Rows Harvested: **2** Previous Crop: **Soybean**
 Harvested Length: **42 feet** Dryland/Irrigation: **Dryland**

2024 CORN IN-FURROW FERTILIZER STUDY - RESEARCH FARM

NH3 Rate (lbs N/ac)	In-Furrow Product	2x2 Fertilizer	Yield (15% RM)	Yield % of Mean	Harvest Moisture (%)	Test Weight (lb./Bu)
160	Agro-Liquid	None	165.6	102%	14.7	63.2
160	Kugler	None	165.2	102%	15.1	60.9
160	Logan Premium	None	163.3	101%	14.6	63.2
160	No Treatment	None	160.2	99%	15.0	62.5
120	Kugler	None	156.0	96%	15.0	63.1
Plot Avg.			162.1			

Date Planted: **5/10/24**
 Date Harvested: **10/6/24**
 Date NH3 Applied: **3/15/24**
 Harvested Length: **42 feet**
 Population (s/ac): **23,000**
 Tillage Type: **No-Till**
 Previous Crop: **Soybean**
 Dryland/Irrigation: **Dryland**

THIS DATA CONTAINS PROPRIETARY AND CONFIDENTIAL INFORMATION OF OHLDE SEED FARMS AND SHALL NOT BE USED, DISCLOSED OR REPRODUCED, IN WHOLE OR IN PART, FOR ANY PURPOSE OTHER THAN TO EVALUATE THIS DATA, WITHOUT THE PRIOR WRITTEN CONSENT OF OHLDE SEED FARMS.



2025 SOYBEAN PLANTING DATE/TREATMENT STUDY - ALL VARIETIES - RESEARCH FARM

Planting Date	Variety	Treatment	Yield (13% RM)	Yield % of Mean	Harvest Moisture (%)	Test Weight (lb./Bu)
April 11th	O 32F2	No Treatment	62.2	94%	9.5	57.2
April 11th	O 32F2	Servo DPI	68.2	103%	8.8	57.9
May 9th	O 32F2	No Treatment	70.4	106%	9.2	56.3
May 9th	O 32F2	Servo DPI	74.2	112%	9.0	55.9
May 24th	O 32F2	No Treatment	70.4	106%	9.0	57.1
May 24th	O 32F2	Servo DPI	71.2	107%	9.0	56.9
June 12th	O 32F2	No Treatment	62.9	95%	10.0	56.3
June 12th	O 32F2	Servo DPI	64.9	98%	9.2	56.6
April 11th	O 38F6 s&e	No Treatment	64.2	97%	9.7	56.9
April 11th	O 38F6 s&e	Servo DPI	66.6	100%	9.0	57.5
May 9th	O 38F6 s&e	No Treatment	68.0	103%	9.2	56.2
May 9th	O 38F6 s&e	Servo DPI	68.7	104%	9.1	56.2
May 24th	O 38F6 s&e	No Treatment	52.5	79%	9.0	56.8
May 24th	O 38F6 s&e	Servo DPI	55.1	83%	9.1	57.3
June 12th	O 38F6 s&e	No Treatment	54.3	82%	9.7	57.0
June 12th	O 38F6 s&e	Servo DPI	53.4	81%	9.1	55.8
April 11th	O 42F6s	No Treatment	71.6	108%	9.8	56.8
April 11th	O 42F6s	Servo DPI	72.4	109%	9.9	57.1
May 9th	O 42F6s	No Treatment	77.7	117%	8.9	55.0
May 9th	O 42F6s	Servo DPI	80.1	121%	9.5	55.2
May 24th	O 42F6s	No Treatment	66.9	101%	8.9	56.8
May 24th	O 42F6s	Servo DPI	70.4	106%	8.9	56.9
June 12th	O 42F6s	No Treatment	60.9	92%	10.0	55.4
June 12th	O 42F6s	Servo DPI	63.1	95%	9.8	55.4
Plot Avg.		66.3				

Date Planted: —
 Date Harvested: —
 Rows Harvested: **4 - 30" row**
 Harvested Length: **55'**
 Population (s/ac): **140,000**
 Tillage Type: **No-Till**
 Previous Crop: **Corn**
 Dryland/Irrigation: **Dryland**

Stand Count:
 4/11 Untreated: 94,000 p/ac
 4/11 Treated: 118,000 p/ac
 5/9 Untreated: 118,000 p/ac
 5/9 Treated: 120,000 p/ac
 5/24 Untreated: 128,000 p/ac
 5/24 Treated: 126,000 p/ac
 6/12 Untreated: 110,000 p/ac
 6/12 Treated: 118,000 p/ac



2025 SOYBEAN PLANTING DATE/TREATMENT STUDY - VARIETIES AVG'D - RESEARCH FARM

Planting Date	Variety	Treatment	Yield (13% RM)	Yield % of Mean	Harvest Moisture (%)	Test Weight (lb./Bu)
All	All	None	65.2	98%	9.4	56.5
All	All	Servo DPI	67.4	102%	9.2	56.5
Plot Avg.			66.3			

All Dates: 4/11, 5/9, 5/24, 6/12
 All Varieties: O 32F2, O 38F6, O 42F6

Rows Harvested: **4 - 30" row**
 Harvested Length: **55 Feet**
 Population (s/ac): **130,000**
 Tillage Type: **No-Till**
 Previous Crop: **Corn**
 Dryland/Irrigation: **Dryland**

Stand Count
 4/11 Untreated: 94,000 p/ac
 4/11 Treated: 118,000 p/ac
 5/9 Untreated: 118,000 p/ac
 5/9 Treated: 120,000 p/ac
 5/24 Untreated: 128,000 p/ac
 5/24 Treated: 126,000 p/ac
 6/12 Untreated: 110,000 p/ac
 6/12 Treated: 118,000 p/ac

THIS DATA CONTAINS PROPRIETARY AND CONFIDENTIAL INFORMATION OF OHLDE SEED FARMS AND SHALL NOT BE USED, DISCLOSED OR REPRODUCED, IN WHOLE OR IN PART, FOR ANY PURPOSE OTHER THAN TO EVALUATE THIS DATA, WITHOUT THE PRIOR WRITTEN CONSENT OF OHLDE SEED FARMS.

2025 SOYBEAN PLANTING DATE/TREATMENT STUDY - RESEARCH FARM

Planting Date	Variety	Treatment	Yield (13% RM)	Yield % of Mean	Harvest Moisture (%)	Test Weight (lb./Bu)
4/11/25	All	Servo DPI	69.1	104%	9.3	57.5
	All	No Treatment	66.0	100%	9.7	57.0
5/8/25	All	Servo DPI	74.4	112%	9.2	55.8
	All	No Treatment	72.0	109%	9.1	55.8
5/24/25	All	Servo DPI	65.6	99%	9.0	57.0
	All	No Treatment	63.3	95%	9.0	56.9
6/12/25	All	Servo DPI	60.5	91%	9.4	55.9
	All	No Treatment	59.4	90%	9.9	56.2
Plot Avg.			66.3			

Rows Harvested: **4 - 30" row**
 Harvested Length: **55 Feet**
 Population (s/ac): **140,000**
 Tillage Type: **No-Till**
 Previous Crop: **Corn**
 Dryland/Irrigation: **Dryland**

Stand Count
 4/11 Untreated: 94,000 p/ac
 4/11 Treated: 118,000 p/ac
 5/9 Untreated: 118,000 p/ac
 5/9 Treated: 120,000 p/ac
 5/24 Untreated: 128,000 p/ac
 5/24 Treated: 126,000 p/ac
 6/12 Untreated: 110,000 p/ac
 6/12 Treated: 118,000 p/ac

2025 SOYBEAN POPULATION STUDY - BY VARIETY - RESEARCH FARM

Population	Variety	Yield Bu/ac	Yield % of Mean	Harvest Moisture (%)	Test Weight (lb./Bu)
80,000	O 34F6	68.3	107%	9.7	58.0
100,000	O 34F6	70.3	110%	9.6	58.3
120,000	O 34F6	73.1	115%	9.7	58.2
140,000	O 34F6	73.9	116%	9.8	58.2
160,000	O 34F6	68.7	108%	9.8	58.3
80,000	O 38F6	55.3	87%	10.7	57.3
100,000	O 38F6	58.7	92%	9.7	57.8
120,000	O 38F6	61.1	96%	9.6	57.4
140,000	O 38F6	61.9	97%	9.8	57.6
160,000	O 38F6	61.6	97%	9.8	57.6
80,000	O 40F6	53.1	83%	9.7	57.7
100,000	O 40F6	53.9	85%	9.6	56.4
120,000	O 40F6	54.1	85%	9.7	58.1
140,000	O 40F6	59.2	93%	9.5	57.8
160,000	O 40F6	60.4	95%	9.6	58.0
80,000	O 41F6	68.6	108%	9.7	56.2
100,000	O 41F6	68.3	107%	9.3	56.9
120,000	O 41F6	69.5	109%	9.4	56.6
140,000	O 41F6	70.0	110%	9.6	57.3
160,000	O 41F6	69.2	109%	9.4	56.7
80,000	O 42F1	59.0	93%	9.5	56.8
100,000	O 42F1	63.2	99%	9.6	57.2
120,000	O 42F1	64.6	101%	9.6	57.6
140,000	O 42F1	64.3	101%	9.9	57.0
160,000	O 42F1	65.9	104%	9.6	57.6
80,000	O 42F6	60.2	95%	9.2	56.4
100,000	O 42F6	63.7	100%	9.4	57.5
120,000	O 42F6	63.0	99%	9.4	56.9
140,000	O 42F6	64.0	100%	9.4	57.3
160,000	O 42F6	63.3	99%	9.6	56.6
Plot Avg.		63.7			

Date Planted: **5/24/25**
 Date Harvested: **10/12/25**
 Rows Harvested: **2**
 Harvested Length: **85 feet**
 Population (s/ac): **-**
 Tillage Type: **No-Till**
 Previous Crop: **Corn**
 Dryland/Irrigation: **Dryland**

THIS DATA CONTAINS PROPRIETARY AND CONFIDENTIAL INFORMATION OF OHLDE SEED FARMS AND SHALL NOT BE USED, DISCLOSED OR REPRODUCED, IN WHOLE OR IN PART, FOR ANY PURPOSE OTHER THAN TO EVALUATE THIS DATA, WITHOUT THE PRIOR WRITTEN CONSENT OF OHLDE SEED FARMS.



2025 SOYBEAN POPULATION STUDY - BY POPULATION - RESEARCH FARM

Population (s/ac)	Yield (13% RM)	Yield % of Mean	Harvest Moisture (%)	Test Weight (lb./Bu)
80,000	60.7	95%	9.7	57.1
100,000	63.0	99%	9.5	57.4
120,000	64.2	101%	9.6	57.5
140,000	65.5	103%	9.7	57.5
160,000	64.8	102%	9.6	57.5
Plot Avg.	63.7			

All Varieties: O 34F6, 38F6, 40F6, 41F6, 42F6, 42F1

Date Planted: **5/24/25**
 Date Harvested: **10/12/25**
 Rows Harvested: **2**
 Harvested Length: **85 feet**
 Population (s/ac): **-**
 Tillage Type: **No-Till**
 Previous Crop: **Corn**
 Dryland/Irrigation: **Dryland**

2025 SOYBEAN FOLIAR APPLIED STUDY - RESEARCH FARM

Variety	Foliar Products Applied	Yield (13% RM)	Yield % of Mean	Harvest Moisture (%)	Test Weight (lb./Bu)
O 42F1	Fungicide, Insecticide, Foliar Nutrients	69.6	102%	9.5	56.1
O 42F1	No Treatment	66.9	98%	9.4	56.1
Plot Avg.		68.3			

Date Planted: **5/24/25**
 Date Harvested: **10/12/25**
 Rows Harvested: **2 - 30" row**
 Harvested Length: **95' (6 reps)**
 Population (s/ac): **130,000**
 Tillage Type: **No-Till**
 Previous Crop: **Corn**
 Dryland/Irrigation: **Dryland**

2025 SOYBEAN SEED APPLIED BIOLOGICAL STUDY - RESEARCH FARM

Company	Seed Applied Product	Yield (13% RM)	Yield % of Mean	Harvest Moisture (%)	Test Weight (lb./Bu)
BioLEVEL	PhosN	65.9	102%	8.6	56.8
Kock Ind.	Protivate	65.4	101%	8.5	57.3
New Field Ag	Nutriquire	65.2	100%	8.9	56.7
Agrauxine	Graph-Ex	65.2	100%	8.6	56.3
New Field Ag	Vict-R	64.4	99%	8.6	57.3
	No Treatment	63.2	97%	8.7	56.8
Plot Avg.		64.9			

Date Planted: **5/24/25**
 Date Harvested: **10/12/25**
 Rows Harvested: **2**
 Harvested Length: **95' (6 reps)**
 Population (s/ac): **130,000**
 Tillage Type: **No-Till**
 Previous Crop: **Corn**
 Dryland/Irrigation: **Dryland**

PhosN **Biological**
 Protivate **Nutrient package**
 Nutriquire **Biological**
 Graph-Ex **Graphite Inoculant**
 Vict-R **Biological**

THIS DATA CONTAINS PROPRIETARY AND CONFIDENTIAL INFORMATION OF OHLDE SEED FARMS AND SHALL NOT BE USED, DISCLOSED OR REPRODUCED, IN WHOLE OR IN PART, FOR ANY PURPOSE OTHER THAN TO EVALUATE THIS DATA, WITHOUT THE PRIOR WRITTEN CONSENT OF OHLDE SEED FARMS.

2025 SOYBEAN BIOLOGICAL/TREATMENT STUDY – RESEARCH FARM

Company	In-Furrow Product Applied	Post Foliar Product Applied	Yield (13% RM)	Yield % of Mean	Harvest Moisture (%)	Test Weight (lb./Bu)
BioLINE	Gold Fulv-IQ	Gold Folv-IQ	66.9	102%	8.9	57.1
BioLINE	Gold Fulv-IQ		66.8	102%	8.8	56.9
Lygos	Soltellus 2000L	Soltellus 2000L	66.4	101%	8.4	56.7
Lygos		Soltellus 2002L	65.9	101%	8.6	56.4
Vive Crop	Averland FC		65.3	100%	8.7	56.9
Lygos	Soltellus 2000L		65.2	100%	8.9	56.4
Vive Crop	Azterknot	Azterknot	65.1	100%	9.0	57.2
New Field Ag	N-Physis		64.3	98%	8.6	57.5
	No Treatment		63.2	97%	8.7	56.8
Plot Avg.			65.5			

Date Planted: **6/14/24** Population (s/ac): **130,000**
 Date Harvested: **10/13/24** Tillage Type: **No-Till**
 Rows Harvested: **2** Previous Crop: **Corn**
 Harvested Length: **55 feet** Dryland/Irrigation: **Dryland**

Gold Fulv-IQ **Fulvic Acid**
 Soltellus **Biodegradable polymer**
 Averland **Biological**
 Azterknot **Biological**
 N-Physis **Biological**

2025 SOYBEAN ROW CLEANER – RESEARCH FARM

Row Cleaner	Yield (13% RM)	Yield % of Mean	Harvest Moisture (%)	Test Weight (lb./Bu)
Down	63.3	101%	9.1	57.5
Up	62.2	99%	9.2	57.3
Plot Avg.		62.8		

Date Planted: **5/24/25**
 Date Harvested: **10/12/25**
 Rows Harvested: **2**
 Harvested Length: **170 feet**
 Population (s/ac): **130,000**
 Tillage Type: **No-Till**
 Previous Crop: **Corn**
 Dryland/Irrigation: **Dryland**

2025 SOYBEAN PLANTING DEPTH STUDY – RESEARCH FARM

Variety	Planting Depth	Yield (15% RM)	Yield % of Mean	Harvest Moisture (%)	Test Weight (lb./Bu)
O 37F3	0.75"	62.0	99%	9.0	57.6
O 37F3	1.25"	63.0	101%	8.9	57.2
O 37F3	2.0"	63.0	101%	9.1	57.5
Plot Avg.		62.6			

Date Planted: **5/27/25**
 Date Harvested: **10/12/25**
 Rows Harvested: **2 - 30" row**
 Harvested Length: **170 feet (3 reps)**
 Population (s/ac): **130,000**
 Tillage Type: **No-Till**
 Previous Crop: **Corn**
 Dryland/Irrigation: **Dryland**

Row Cleaner Brand: Sunco
 Final Stand
 0.75": 112,000 p/ac
 1.25": 107,500 p/ac
 2.0": 102,500 p/ac

THIS DATA CONTAINS PROPRIETARY AND CONFIDENTIAL INFORMATION OF OHLDE SEED FARMS AND SHALL NOT BE USED, DISCLOSED OR REPRODUCED, IN WHOLE OR IN PART, FOR ANY PURPOSE OTHER THAN TO EVALUATE THIS DATA, WITHOUT THE PRIOR WRITTEN CONSENT OF OHLDE SEED FARMS.



2025 SOYBEAN PLANTER PLACEMENT STUDY – RESEARCH FARM

Brand	Hybrid	Yield (15% RM)	Yield % of Mean	Harvest Moisture (%)	Test Weight (lb./ Bu)
In Between Rows	O 37F3	62.9	98%	8.7	57.2
On Top on Row	O 37F3	65.5	102%	8.7	57.5
Plot Avg.		64.2			

Stand count
 In Between Rows: 104,500 p/ac
 On Top on Row: 111,500 p/ac

Date Planted: **5/10/25**
 Date Harvested: **5/24/25**
 Rows Harvested: **2**
 Harvested Length: **170 feet (3 reps)**
 Population (s/ac): **140,000**
 Tillage Type: **No-Till**
 Previous Crop: **Corn**
 Dryland/Irrigation: **Dryland**

2020-2023, 2025 SOYBEAN PLANTING DATE STUDY – RESEARCH FARM

Planting Date	2020 (bu/ac)	2021 (bu/ac)	2022 (bu/ac)	2023 (bu/ac)	2025 (bu/ac)	5 - Year Average
Early	45.9	62.4	33.8	48.5	69.1	51.9
Mid	43.7	60.9	32.8	51.4	70.0	51.8
Late	36.4	48.0	30.7	45.1	60.5	44.1
Plot Avg.			57.1			

Early = < April 30th
 Mid = May 1st - June 6th
 Late = > June 7th

Rows Harvested: **2 - 30" row**
 Harvested Length: **170 Feet**
 Population (s/ac): **140,000**
 Tillage Type: **No-Till**
 Previous Crop: **Corn**
 Dryland/Irrigation: **Dryland**

2019-2025 SOYBEAN POPULATION STUDY – RESEARCH FARM

Population	2019 Yield (bu/ac)	2020 Yield (bu/ac)	2021 Yield (bu/ac)	2023 Yield (bu/ac)	2024 Yield (bu/ac)	2025 Yield (bu/ac)	6 - Year Average
80,000 s/ac	52.4	42.3	53.7	41.0	45.1	60.7	49.2
100,000 s/ac	55.8	44.2	54.2	42.2	44.9	63.0	50.7
120,000 s/ac	54.4	45.7	55.3	43.5	49.1	64.2	52.0
140,000 s/ac	55.9	48.0	56.2	43.3	48.7	65.5	52.9
160,000 s/ac	56.1	48.3	55.2	42.6	49.1	64.8	52.7

To increase population 20,000 s/ac we need to see a 0.8 bu/ac increase in yield to breakeven at \$10.00/bu

Previous Crop: **Corn**
 Dryland/Irrigation: **Dryland**

THIS DATA CONTAINS PROPRIETARY AND CONFIDENTIAL INFORMATION OF OHLDE SEED FARMS AND SHALL NOT BE USED, DISCLOSED OR REPRODUCED, IN WHOLE OR IN PART, FOR ANY PURPOSE OTHER THAN TO EVALUATE THIS DATA, WITHOUT THE PRIOR WRITTEN CONSENT OF OHLDE SEED FARMS.

2018, 2022, 2023 & 2025 SOYBEAN PLANTING DEPTH STUDY - RESEARCH FARM

Planting Depth	2017 (bu/ac)	2021 (bu/ac)	2022 (bu/ac)	2023 (bu/ac)	2025 (bu/ac)	5 - Year Average
Shallow	29.5	53.9	27.7	35.5	62.0	41.7
Mid	36.7	56.4	32.3	40.3	63.0	45.7
Deep	33.7	56.0	29.9	36.8	63.0	43.9
Plot Avg.			43.8			

Shallow = < 1.0"
Mid = 1.25" - 1.75"
Deep = > 1.75"

Rows Harvested: **2 - 30" row**
Harvested Length: **170 Feet**
Population (s/ac): **130,000**
Tillage Type: **No-Till**
Previous Crop: **Corn**
Dryland/Irrigation: **Dryland**

2020 SOYBEAN CLOSING WHEEL STUDY - RESEARCH FARM

Closing Wheel	Stand Count	Yield (13% RM)	Yield % of Mean
Yetter Paddle Wheel	125,300	41.4	102%
Yetter Twister	120,600	41.4	102%
Auspoint Coil Closing	121,300	41.2	101%
Schlagel Posi	121,600	41.1	101%
Tompson	119,500	41.0	101%
Mohawk	124,000	40.6	100%
Dawn M-Series Curvetine	118,300	40.0	98%
Solid Rubber	119,000	39.5	97%
Copperhead Furrow Cruisers	107,800	39.4	97%
Plot Avg.		40.8	

Date Planted: **5/18/20**
Date Harvested: **10/19/20**
Rows Harvested: **2 - 30" row**
Harvested Length: **170 Feet**
Population (s/ac): **130,000**
Tillage Type: **No-Till**
Previous Crop: **Corn**
Dryland/Irrigation: **Dryland**



Yetter Twister



Copperhead Furrow Cruiser



Solid Rubber



Schlagel Posi



Tompson



Schlagel Mohawk



Dawn M-Series Curvetine



Yetter Paddle Wheel



Auspoint Coil Closing

THIS DATA CONTAINS PROPRIETARY AND CONFIDENTIAL INFORMATION OF OHLDE SEED FARMS AND SHALL NOT BE USED, DISCLOSED OR REPRODUCED, IN WHOLE OR IN PART, FOR ANY PURPOSE OTHER THAN TO EVALUATE THIS DATA, WITHOUT THE PRIOR WRITTEN CONSENT OF OHLDE SEED FARMS.



2021 SOYBEAN CLOSING WHEEL STUDY - RESEARCH FARM

Closing Wheel	Stand Count (plants/Ac)	Yield (13% RM)	Yield % of Mean
Copperhead Furrow Cruiser	112,500	52.7	102%
Mohawk	112,625	52.4	101%
Tompson	113,100	51.9	100%
Yetter Twister	109,625	51.8	100%
Solid Rubber	110,800	51.7	100%
Schlagel Posi	110,875	50.4	97%
Plot Avg.		51.8	

Date Planted: **6/6/21**
 Date Harvested: **10/18/21**
 Rows Harvested: **2 - 30" row**
 Harvested Length: **170 Feet**
 Population (s/ac): **130,000**
 Tillage Type: **No-Till**
 Previous Crop: **Corn**
 Dryland/Irrigation: **Dryland**



Yetter Twister



Copperhead Furrow Cruiser



Solid Rubber



Schlagel Posi



Tompson

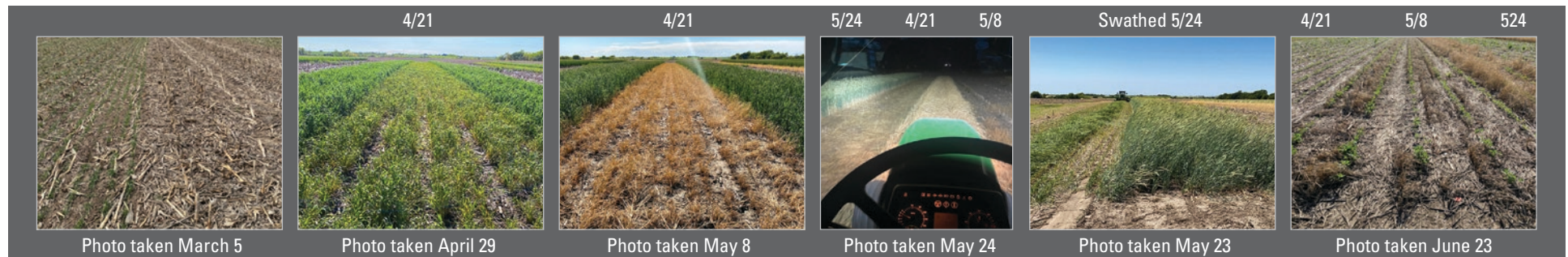


Schlagel Mohawk

2024 SOYBEAN COVER CROP STUDY - RESEARCH FARM

Variety	Rye Sprayed	Yield (13% RM)	Yield % of Mean	Harvest Moisture (%)	Test Weight (lb./Bu)
O 40F4s&e	5/8/24	58.0	104%	8.8	57.3
O 40F4s&e	5/24/24	57.1	102%	8.8	56.7
O 40F4s&e	No Till	55.5	99%	8.8	58.4
O 40F4s&e	4/21/24	55.4	99%	8.9	58.3
O 40F4s&e	Swathed 5/24	53.5	96%	9.0	58.9
Plot Avg.		55.9			

Date Planted: **5/24/24**
 Date Harvested: **10/13/24**
 Rows Harvested: **2**
 Harvested Length: **-**
 Population (s/ac): **130,000**
 Tillage Type: **No-Till**
 Previous Crop: **Milo**
 Dryland/Irrigation: **Dryland**



THIS DATA CONTAINS PROPRIETARY AND CONFIDENTIAL INFORMATION OF OHLDE SEED FARMS AND SHALL NOT BE USED, DISCLOSED OR REPRODUCED, IN WHOLE OR IN PART, FOR ANY PURPOSE OTHER THAN TO EVALUATE THIS DATA, WITHOUT THE PRIOR WRITTEN CONSENT OF OHLDE SEED FARMS.

2022 SOYBEAN FOLIAR APPLIED STUDY - RESEARCH FARM

Brand	Foliar Products Applied	Yield (13% RM)	Yield % of Mean	Harvest Moisture (%)	Test Weight (lb./Bu)
OHLDE	Fungicide, Insecticide, Foliar Nutrients	37.1	103%	10.2	59.3
OHLDE	Fungicide, Insecticide	36.1	100%	10.1	58.7
OHLDE	No Treatment	34.7	96%	9.9	59.0
Plot Avg.		35.9			

Date Planted: **6/11/22**
 Date Harvested: **10/31/22**
 Rows Harvested: **2 - 30" row**
 Harvested Length: **170 feet**
 Population (s/ac): **130,000**
 Tillage Type: **No-Till**
 Previous Crop: **Milo**
 Dryland/Irrigation: **Dryland**

2022 SOYBEAN STARTER FERTILIZER STUDY - RESEARCH FARM

Brand	Starter Fertilizer	Variety	Yield (13% RM)	Yield % of Mean	Harvest Moisture (%)	Test Weight (lb./Bu)
OHLDE	AgroLiquid+10-34-0, Boron, Sulfur	O 35F1	36.7	103%	9.9	56.7
OHLDE	10-34-0, Boron, Sulfur	O 35F1	36.4	102%	9.8	56.7
OHLDE	Kalibrate (in-furrow)	O 35F1	35.3	99%	9.8	56.2
OHLDE	No Treatment	O 35F1	34.8	97%	9.7	56.2
Plot Avg.			35.8			

Date Planted: **6/11/22**
 Date Harvested: **10/31/22**
 Rows Harvested: **2 - 30" row**
 Harvested Length: **170 feet**
 Population (s/ac): **130,000**
 Tillage Type: **No-Till**
 Previous Crop: **Corn**
 Dryland/Irrigation: **Dryland**

AgroLiquid (in-furrow): 3 gal/Ac
 10-34-0, Boron, Sulfur (2x0): 1 qt/acre
 Kalibrate (in-furrow): 1 qt/acre

2023 SOYBEAN PLANTING ROW WIDTH - RESEARCH FARM

Variety	Planting Row Width	Yield (13% RM)	Yield % of Mean	Harvest Moisture (%)	Test Weight (lb./Bu)
O 42F1	30"	40.0	106%	10.3	57.1
O 42F1	15"	39.1	103%	10.6	56.7
O 36F3	30"	36.5	96%	8.0	57.8
O 36F3	15"	35.9	95%	7.9	58.1
Plot Avg.		37.9			

Date Planted: **5/25/23**
 Date Harvested: **10/8/23**
 Rows Harvested: **2 30" rows**
 Harvested Length: **170 feet**
 Population (s/ac): **130,000**
 Tillage Type: **No-Till**
 Previous Crop: **Corn**
 Dryland/Irrigation: **Dryland**

THIS DATA CONTAINS PROPRIETARY AND CONFIDENTIAL INFORMATION OF OHLDE SEED FARMS AND SHALL NOT BE USED, DISCLOSED OR REPRODUCED, IN WHOLE OR IN PART, FOR ANY PURPOSE OTHER THAN TO EVALUATE THIS DATA, WITHOUT THE PRIOR WRITTEN CONSENT OF OHLDE SEED FARMS.



Rooted in ResearchSM



Ohlde Seed Farms

1577 4th Road | Palmer, Kansas
785.692.4555 | 877.692.4555
www.ohldeseed.com

